

# MAGNA GRATIA

CULTIVATING GROWTH

*Stewardship Report*



A CAMPAIGN FOR THE FUTURE OF REDEEMER CLASSICAL SCHOOL



OUR MISSION

To partner with families to provide for the Christian discipleship of children through a classical education for the greater glory of God.



CULTIVATING  
GROWTH  
*Deep roots. Lasting impact.*

In 2021, we embarked on the *Cultivating Growth: Deep Roots, Lasting Impact* capital campaign in order to fund a significant improvement and expansion of our campus. Our hope: to better serve the needs of our growing student population, and to provide even more students with the opportunity to receive a REDEEMER education.

It is with exceeding joy and gratitude that I announce that — because of *your* faithfulness — the *Cultivating Growth* campaign exceeded its fundraising goal! **To date you have contributed \$2,032,276 in gifts and pledges, surpassing our \$2M cash goal.** (That's in addition to the \$25,000 in Planned & Estate gifts.) We are both humbled by and amazed at the way God has blessed Redeemer through your generosity and prayers. Truly, we could not have done this without you. **THANK YOU** for believing in our mission and investing in the future of our school and our students.

While this campaign will fund building projects, it's never been about just bricks and mortar. Rather, the impact of your support is measured in the lives of our faculty, staff, and students. And it is measured in the effect on our community and beyond, which will benefit from having a growing number of Redeemer alumni living and working in their midst. We're excited to witness the deep and lasting impact your investment will have in the years to come.

*Soli Deo Gloria!*

Ron Hoch, *Head of School*

# The Numbers

In 2020, we had the quintessential “good problem” to solve: a growing student body in need of more classroom space ... as well as an aging infrastructure in need of refurbishment to accommodate the largest enrollment in our school’s history (**249**). The *Cultivating Growth* capital campaign was launched in 2021 with the goal of raising **\$2M** to address these needs. And you — the Redeemer community — answered the call. Below you’ll find some of the numbers that highlight Redeemer’s need and how you met it.



“Redeemer is preparing students not only for college but for life. We see a bright future for this school and wanted to be a part of this exciting project.”

REDEEMER GRANDPARENT



**88%**

ENROLLMENT INCREASE in a five-year span (between 2018 and 2023)

**143**

# of FAMILIES SERVED from all over the Valley

**\$2,032,276**

TOTAL GIFTS & PLEDGES donated to secure the future of Redeemer

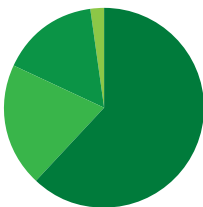
**348**

# of UNIQUE DONORS

**74%**

of the REDEEMER COMMUNITY donated to the campaign

*The success of this campaign would not have been possible without your combined efforts and prayers.*  
THANK YOU.



**Parents:** \$1,252,317 (62%)  
**Friends:** \$405,901 (20%)  
**Grandparents:** \$330,133 (16%)  
**Staff:** \$43,925 (2%)

**CULTIVATING GROWTH**  
*Deep roots. Lasting impact.*

2

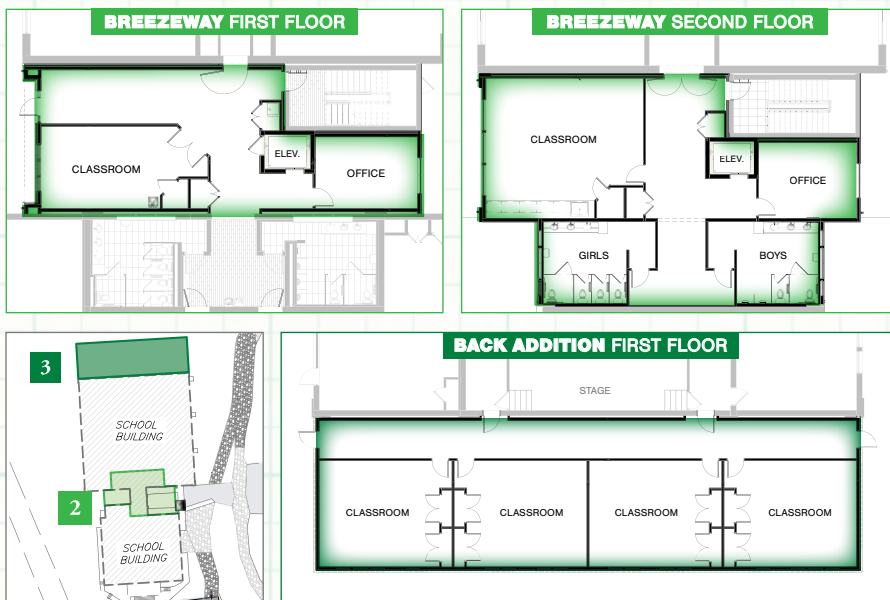
# Planting for the future

The funds you donated during the *Cultivating Growth* capital campaign will allow us to grow our programs and our physical space, benefiting current Redeemer students and those for generations to come.

3

## Plans and timelines

There are three essential elements of this project: the redesign of the **carpool line and parking lots**, the renovation and expansion of the **breezeway** and the construction of a **back addition**.



### [1] REROUTE CARPOOL & INCREASE PARKING

This aspect of the project was **COMPLETED** in early fall of 2023. The new traffic pattern has improved safety for our students and made carpool run more smoothly. Parking on campus increased from 17 spaces to 68.

### [2] REVAMP & EXPAND THE BREEZEWAY

The first phase of this project (*renovated restrooms*) was completed during the summer of 2023. The second phase of this two-story expansion will **begin in Summer 2024** and will include the addition of an elevator, more classrooms, offices, and new bathrooms on the second floor.

### [3] BUILD A BACK ADDITION

Construction of an addition off the back of the building will create four (4) new classroom spaces. This will not only be a cost-effective way to expand our physical footprint, but also an unobtrusive one. **We plan to begin construction as soon as we have the proper permits.**

Lord willing, all of these capital projects will be **finished by early 2025**.  
Would you join us in praying for Redeemer Classical School?

# REDEEMER CLASSICAL SCHOOL

*The good. The true. The beautiful.*

## **CAMPAIGN LEADERSHIP**

Ron Hoch

*Head of School*

Jaye Brumfield

*Director of Advancement*

Ashleigh Funkhouser

*Campaign Manager*

## **BOARD OF DIRECTORS**

Jonathan Bucher, *Chair*

Jim Fries

Jenni Aulgur

Kate Pascarella

John Allen

Kemper Funkhouser

Bret Kerns

## **EXECUTIVE CAMPAIGN COMMITTEE**

Jonathan & Ashley Bucher

Joe & Sallie Funkhouser

Ron Hoch

Dennis Houff

## **CAMPAIGN STEERING COMMITTEE**

Jenni Aulgur

Jaye Brumfield

Ashleigh Funkhouser

Kemper Funkhouser

Ron Hoch

Ruth Lorson

Daniel Rose

*We would like to extend a special thank you to these volunteers for leading a successful campaign and to The FOCUS Group for their consultation and support.*